

DESIGN IT YOURSELF



NATIVE GARDEN

Deva Luna

EarthCare Landscaping

408-871-2792

Steps for Landscape Design

1. Goals
2. Budget
3. Site Analysis
4. Base Map
5. Conceptual Diagram
6. Select Plants

Common mistakes

- The collector's garden (one of everything!)
- Overplanting
- Not enough contrast between plants
- Designing by flower color (needs "bones")
- Not creating conditions for the plants to thrive
- Mixing different hydrozones
- Not maintaining the garden

Design Concepts

- The rule of odd numbers
- Massing
- Layering
- Repetition
- Contrast
- Function



Design & photo by Pete Veilleux

Leaf texture contrast is important



GOOD CONTRAST



POOR CONTRAST

Drawn by Fran Adams



Design: Stephanie Curtis Photo: Deva Luna

Texture, massing, repetition



Design: Stephanie Morris Photo: Deva Luna

Massing, repetition, layering



Textural contrast & massing



Structure & texture



Design: Sherri Osaka Photo: Deva Luna

Structure



Hydrozoning

Photo: Carol Bornstein



California Buckeye

Try to create year-round interest



Spring



Douglas Iris & Alum Root

Summer



Autumn Sage & Beach Aster



CA Fuchsia & Deer Grass

Fall



Winter textures

Cleveland Sage & Deer Grass

BONES:

Hardscape that is attractive, bold and functional



BONES:

Contemporary retaining wall



Native Horsetail (keep contained!)

BONES

can also be plants with good structure

Dr. Hurd Manzanita



GUTS:

Outstanding and hard working perennials



Cedros Island Verbena & Poppies

SKIN:

Ground covers that tie it all together visually



Green Supreme Manzanita & Pt. Sal Spreader Sage

ACCENTS:

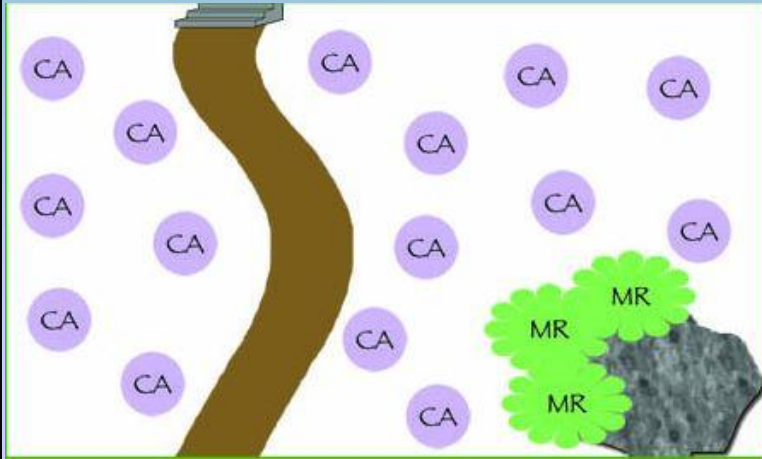
Focal points to draw the eye



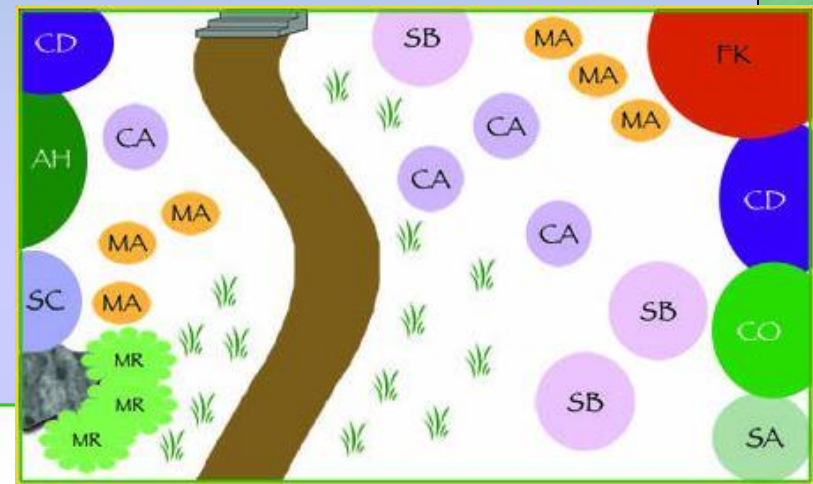
What do you need for the design?

- Measuring tape(s)
- Ruler (but an architect's scale is easier)
- Large piece of paper (gridded is easier)
- Compass or another way to find north

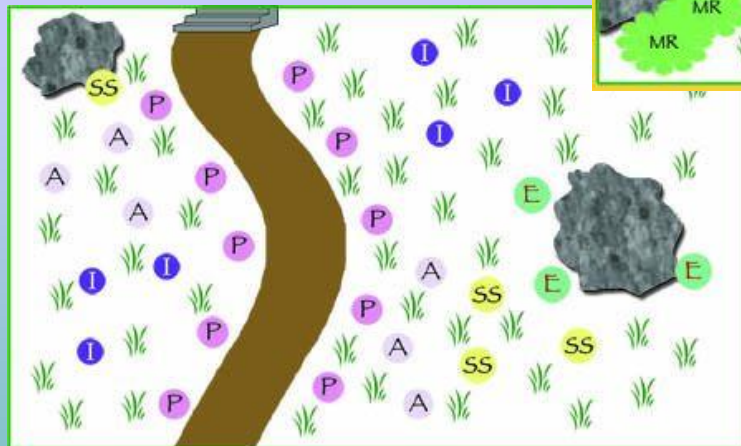
Sample Designs from Yerba Buena Nursery



Ground covers & grasses



Meadow with ground cover & habitat shrubs



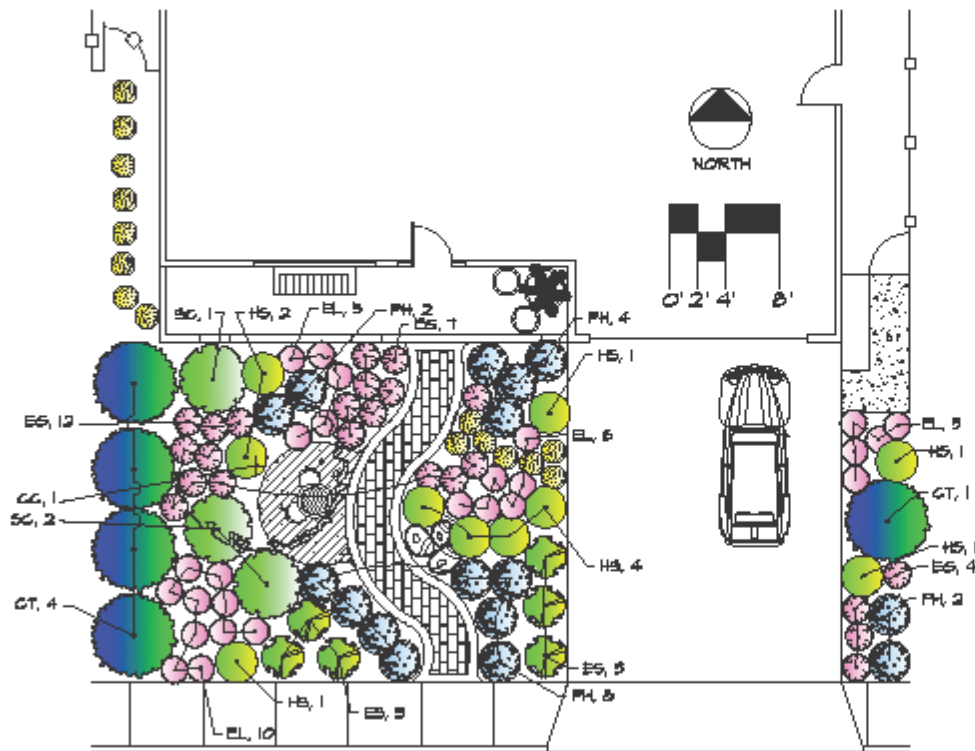
Meadow with small grasses & colorful perennials



GREEN GARDENS HEALTHY CREEKS

Café Garden (Small, Sunny Yard)

Sustainable concept design for yards in Santa Clara Valley



- Pervious pavers
- Emitting concrete porch
- Concrete stepping stone
- Used wooden or iron cafe table
- Garden pots
- Group of boulders
- Bench made from recycled plastic
- Emitting from door or garden gate



Rosy Buckwheat
Erigeron grande var. *rubescens*



California Fuchsia
Epilobium septentrionale
'Wayne's Silver'



Seaside Daisy
Erigeron glaucus 'Wayne Rodrick'



Beard Tongue
Penstemon heterophyllus
'Margarita Bop'



Cleveland Sage
Salvia clevelandii



Sticky Monkeyflower
Mimulus aurantiacus

About the Concept Design Series

These designs are simple concepts to provide inspiration and ideas. Check with local nurseries, landscapers or other sustainable garden designers to help choose the best plants for your yard.

10 sample plans / City of San Jose website

<http://www.sanjoseca.gov/index.aspx?NID=3734>

What does professional landscape design cost?

- Typical landscape designer rates are around \$75-125/hr
- Landscape architects are higher (usually 10-12% of construction cost)
- Average front yard design costs range from \$1000 to \$2500
- Average backyard design costs range from \$2000 to \$4000

Professional Costs:

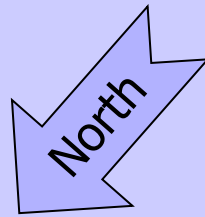
<http://www.earthcareland.com/what-we-do/installation.html>

Example of Goals

- Low maintenance
- Save water
- Bird and pollinator habitat
- Path to back gate
- Screening neighbor's ugly shed
- Compatible with style of house & neighborhood
- Make entry more welcoming
- Landscape around an existing redwood tree

Then prioritize the list

Begin by measuring

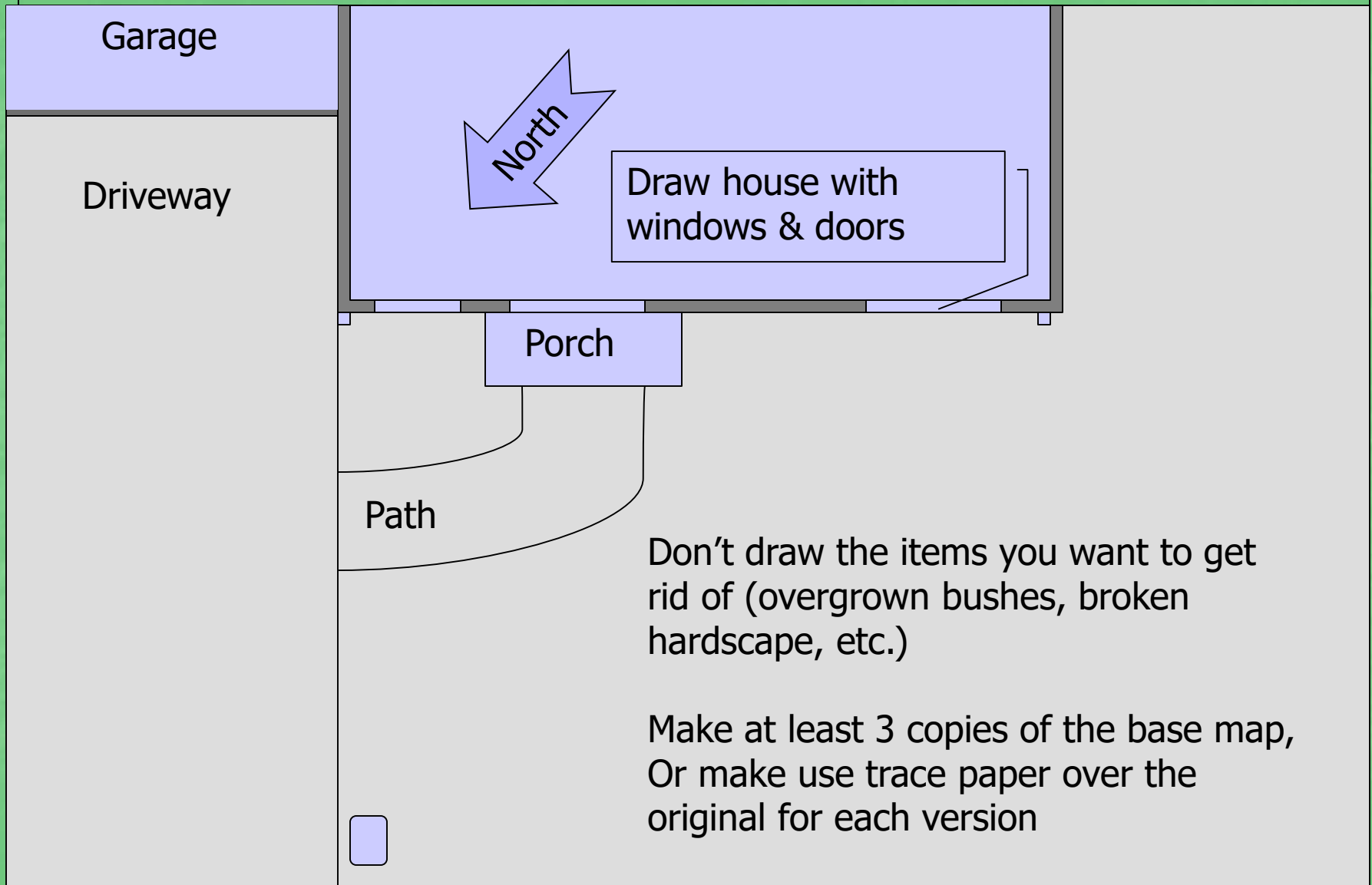


Start by measuring the whole area

Fit it on your page at $1/8''$ or $1/4''$ per foot

1. Site the house; show property lines
2. North arrow
3. Driveway and paths, hose bibbs, utilities, downspouts, fence and gates
4. Trees/shrubs that are staying

Base Map Example



Site Analysis

Sunset climate zone

Look for possible microclimates

Soil testing

Identify plants to remove (be critical here!)

Identify sun/shade patterns

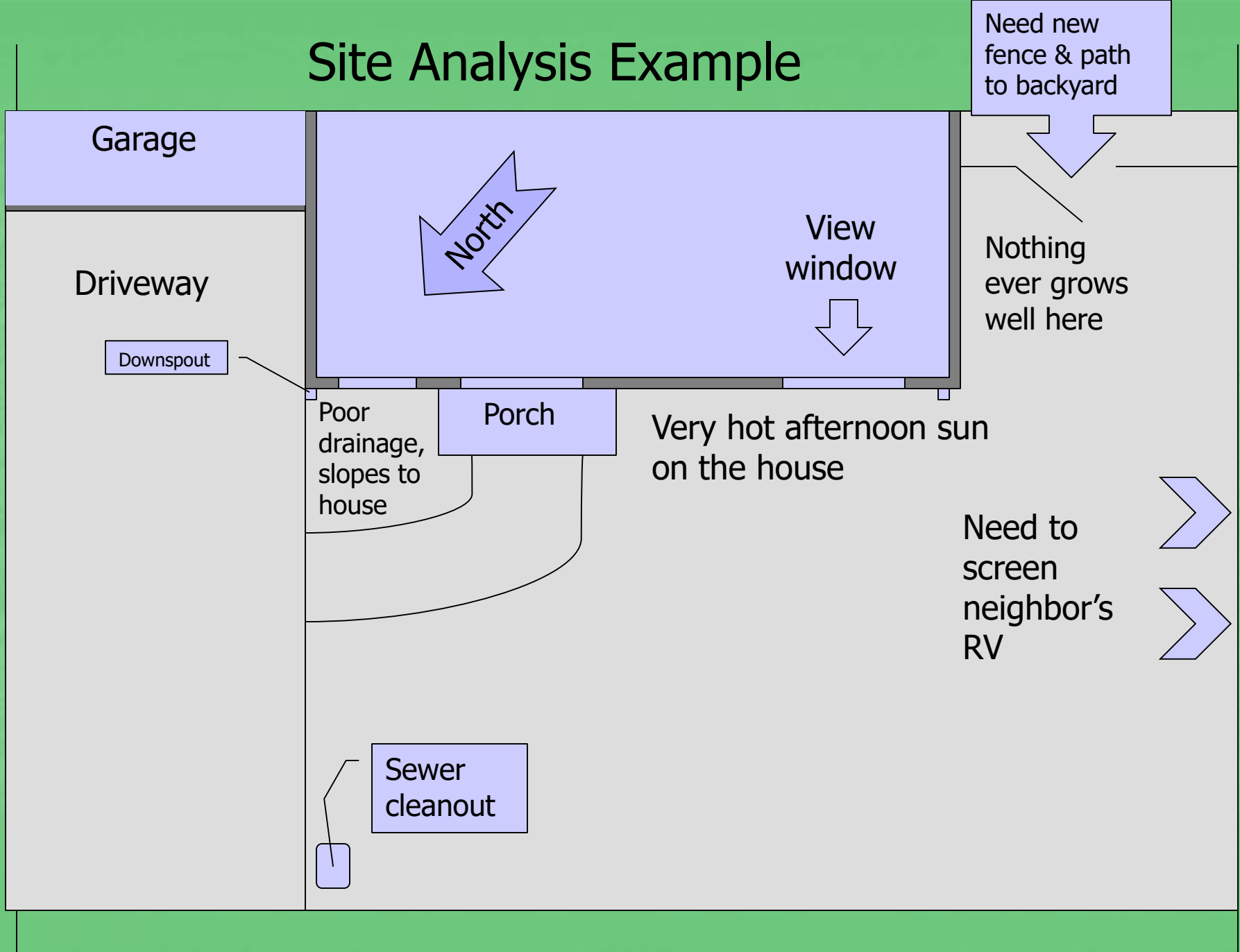
Important views of and from the house

Things you want to hide

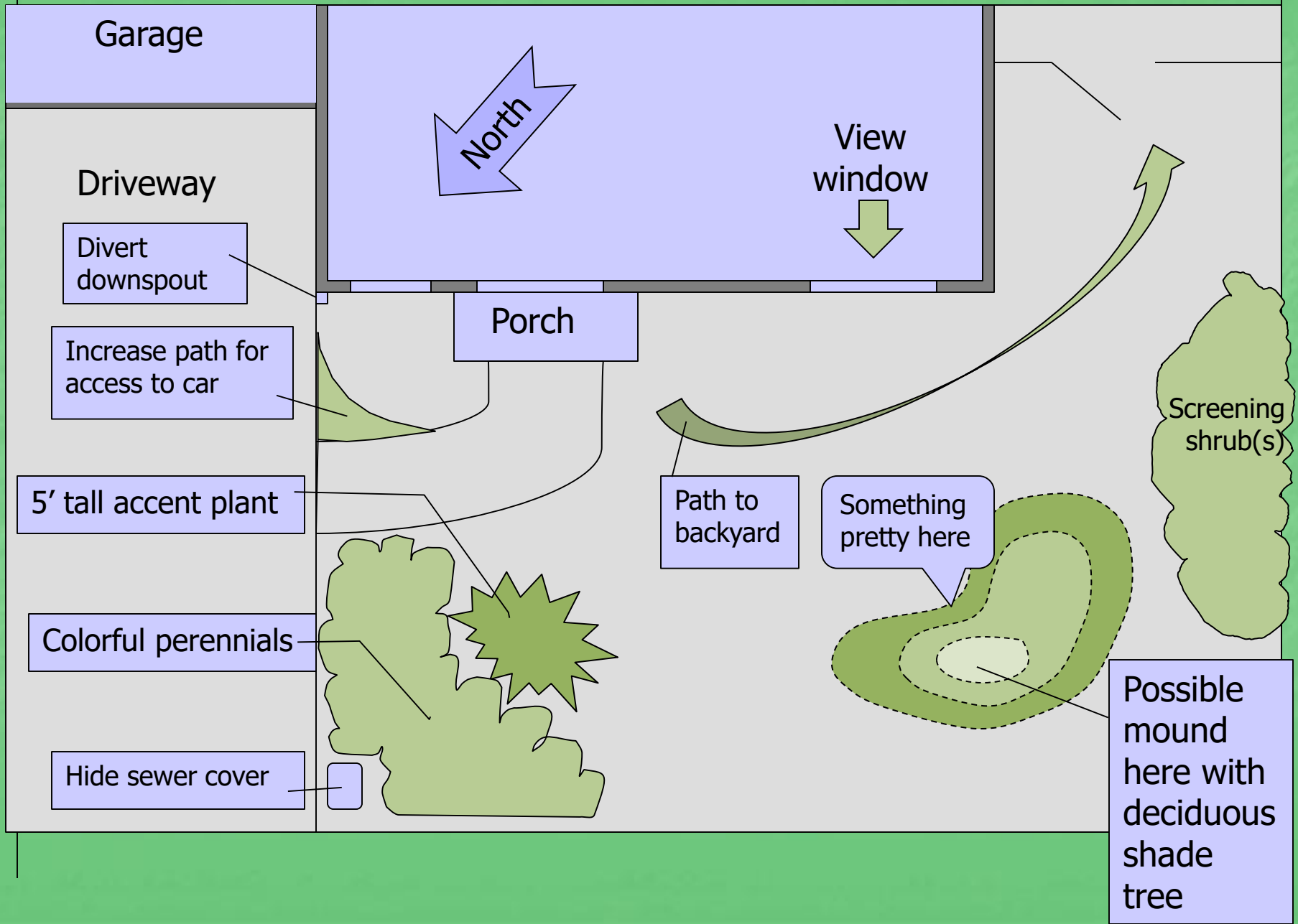
Overhead wires, poles, trees (& neighbor's
overhanging tree too)

Logically traveled paths

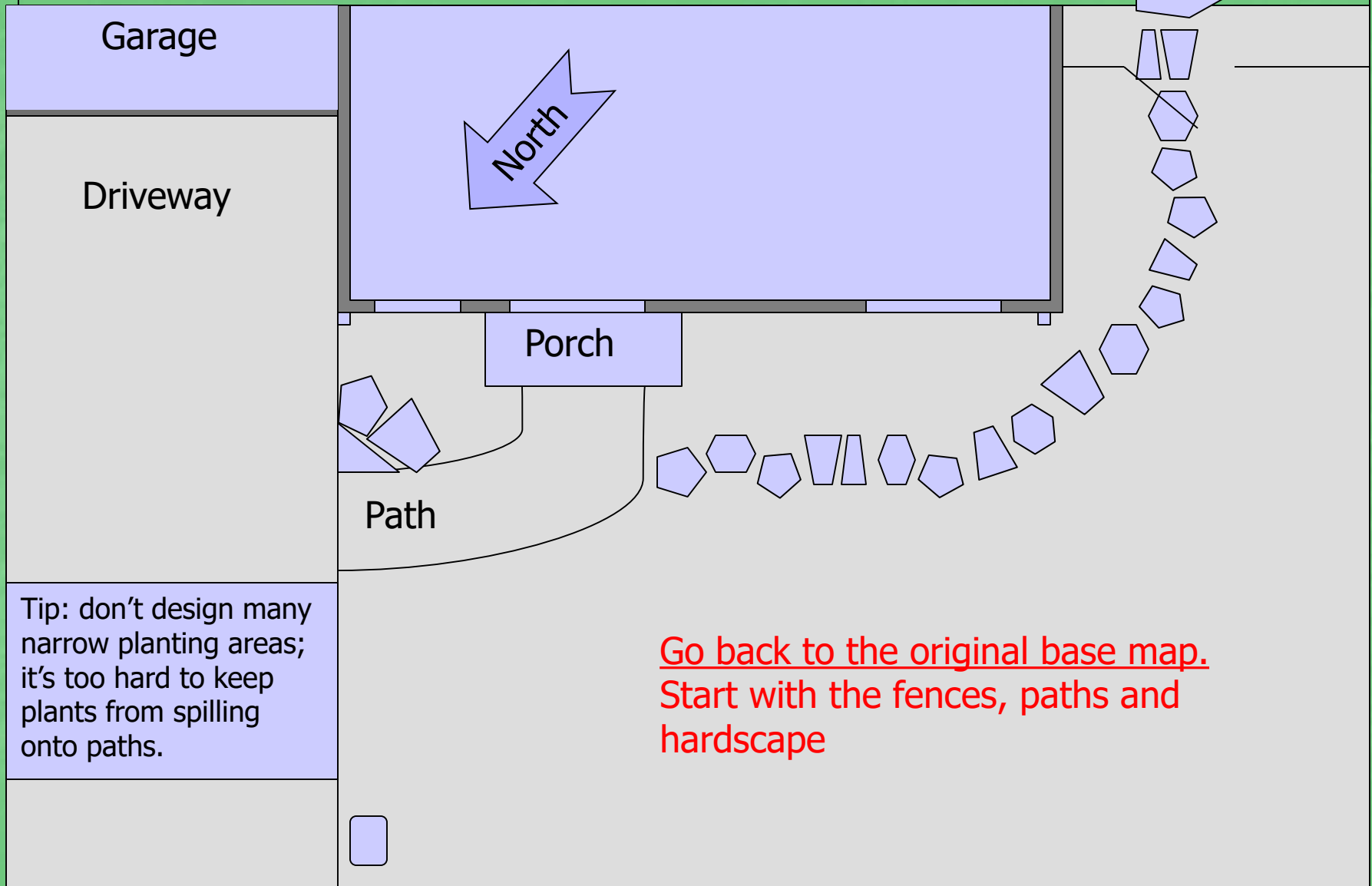
Site Analysis Example



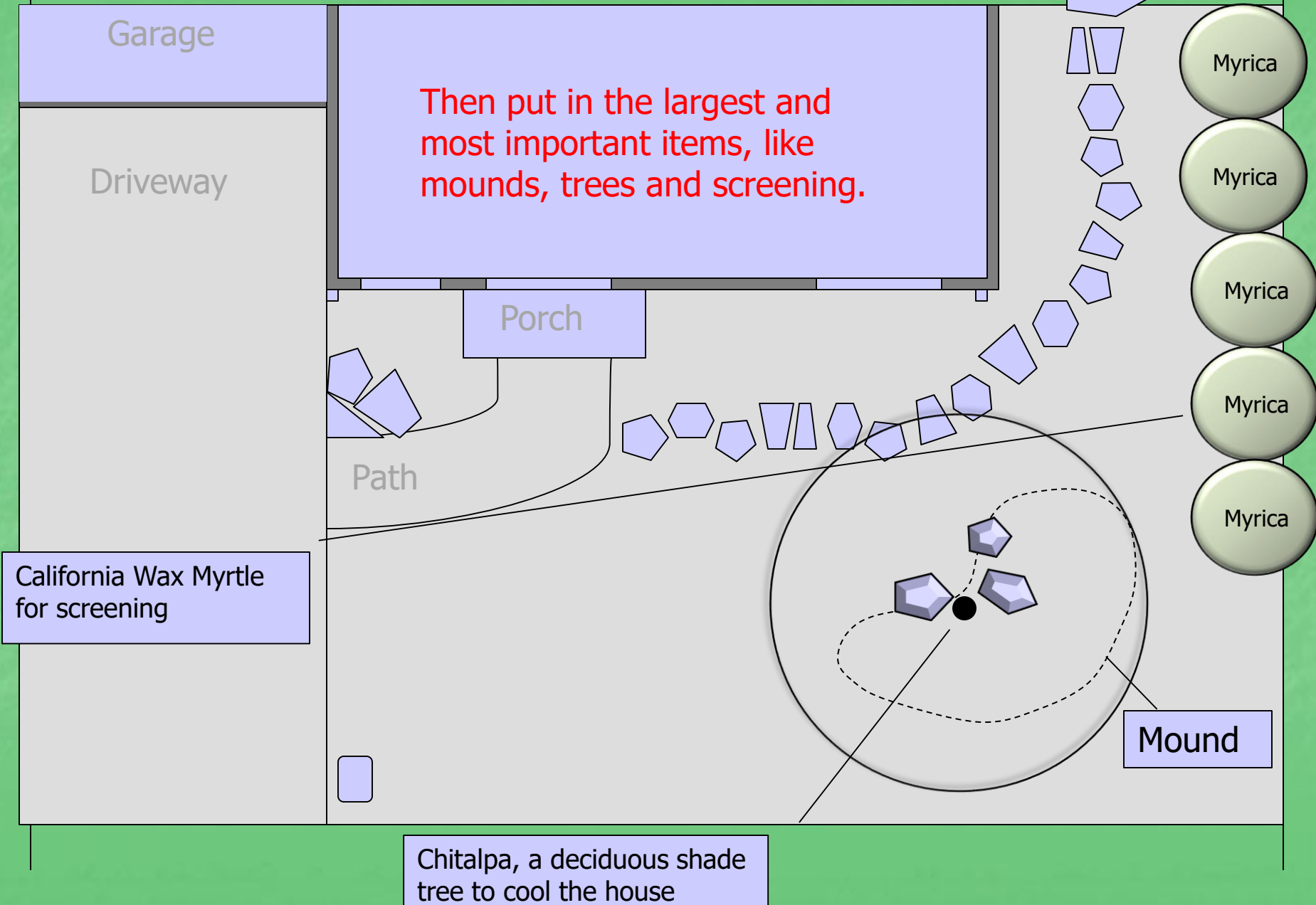
Conceptual Diagram Example



How you create the plan



Trees & Screening: The Big Bones



Trees & Screening: The Big Bones

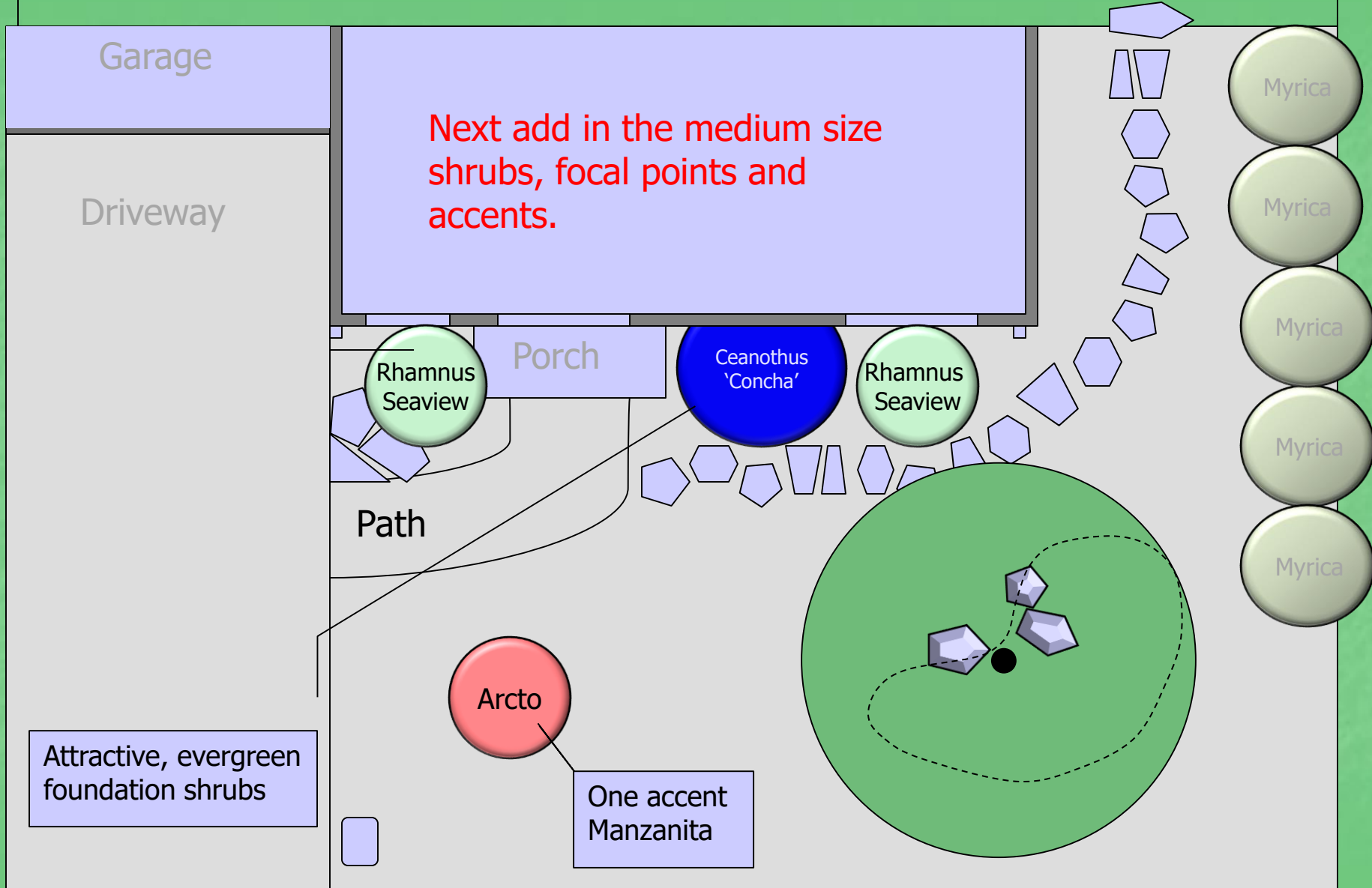


California Wax Myrtle for screening

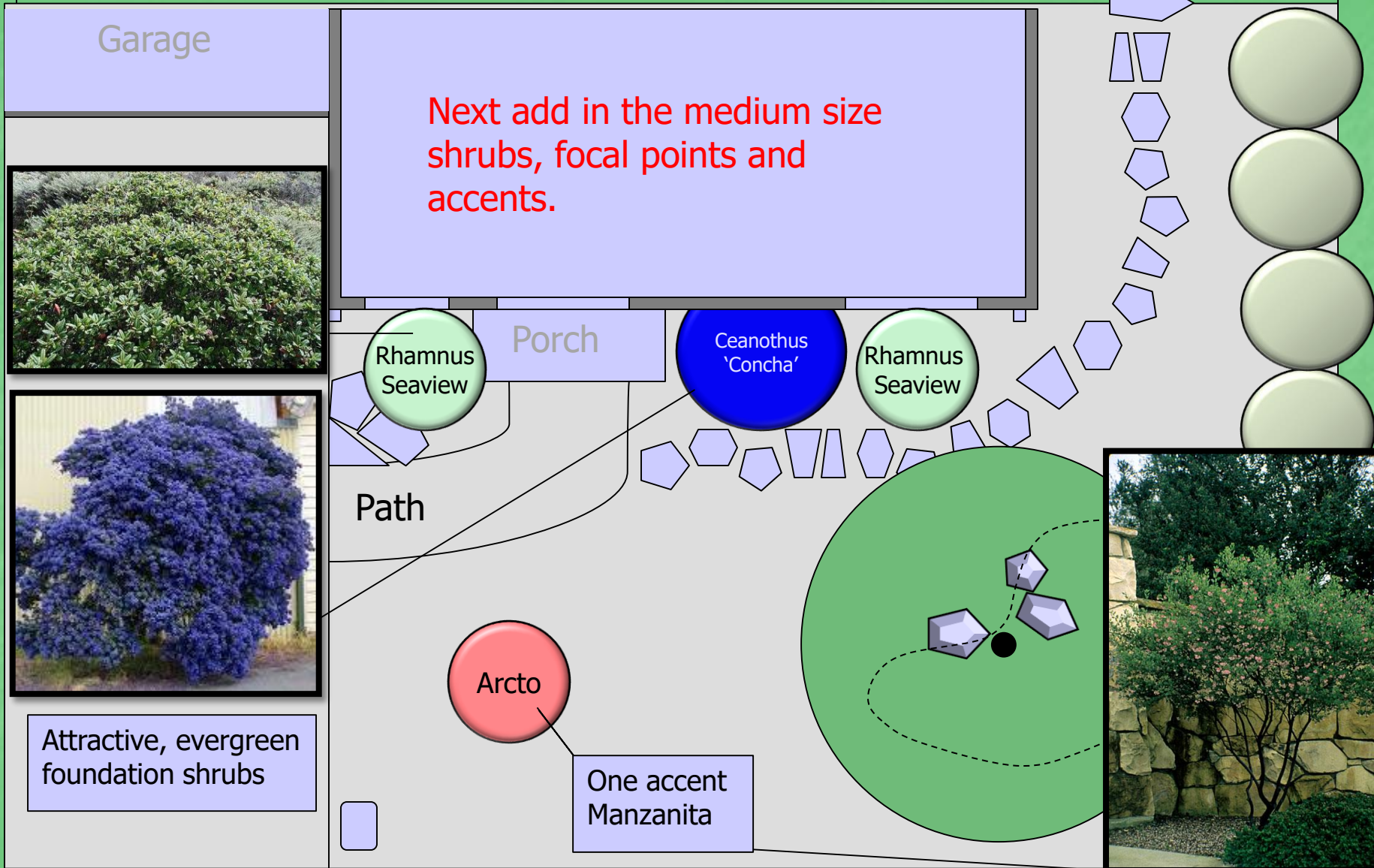


Chitalpa, a deciduous shade tree to cool the house

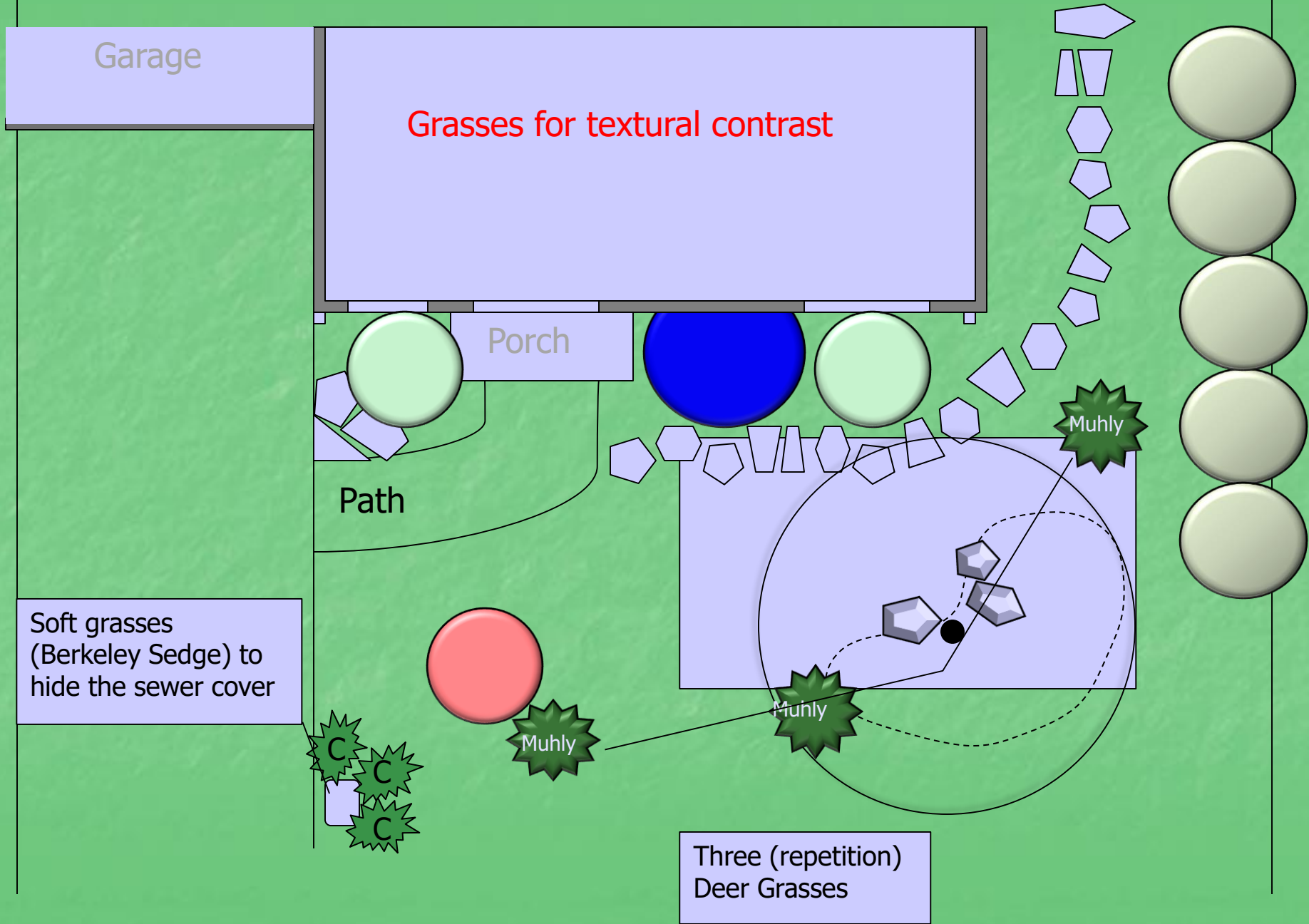
Medium Size Shrubs: The Smaller Bones



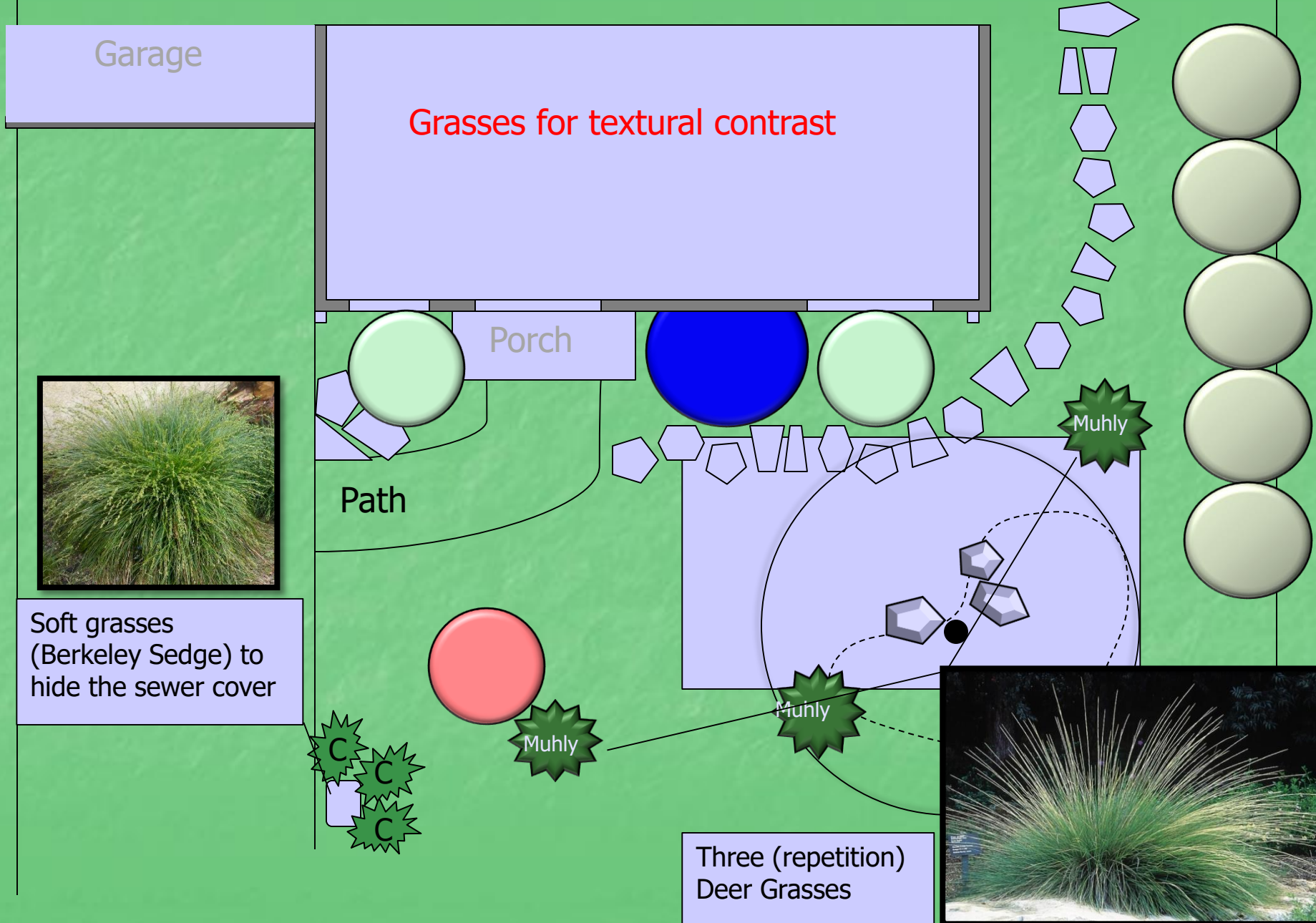
Medium Size Shrubs: The Smaller Bones



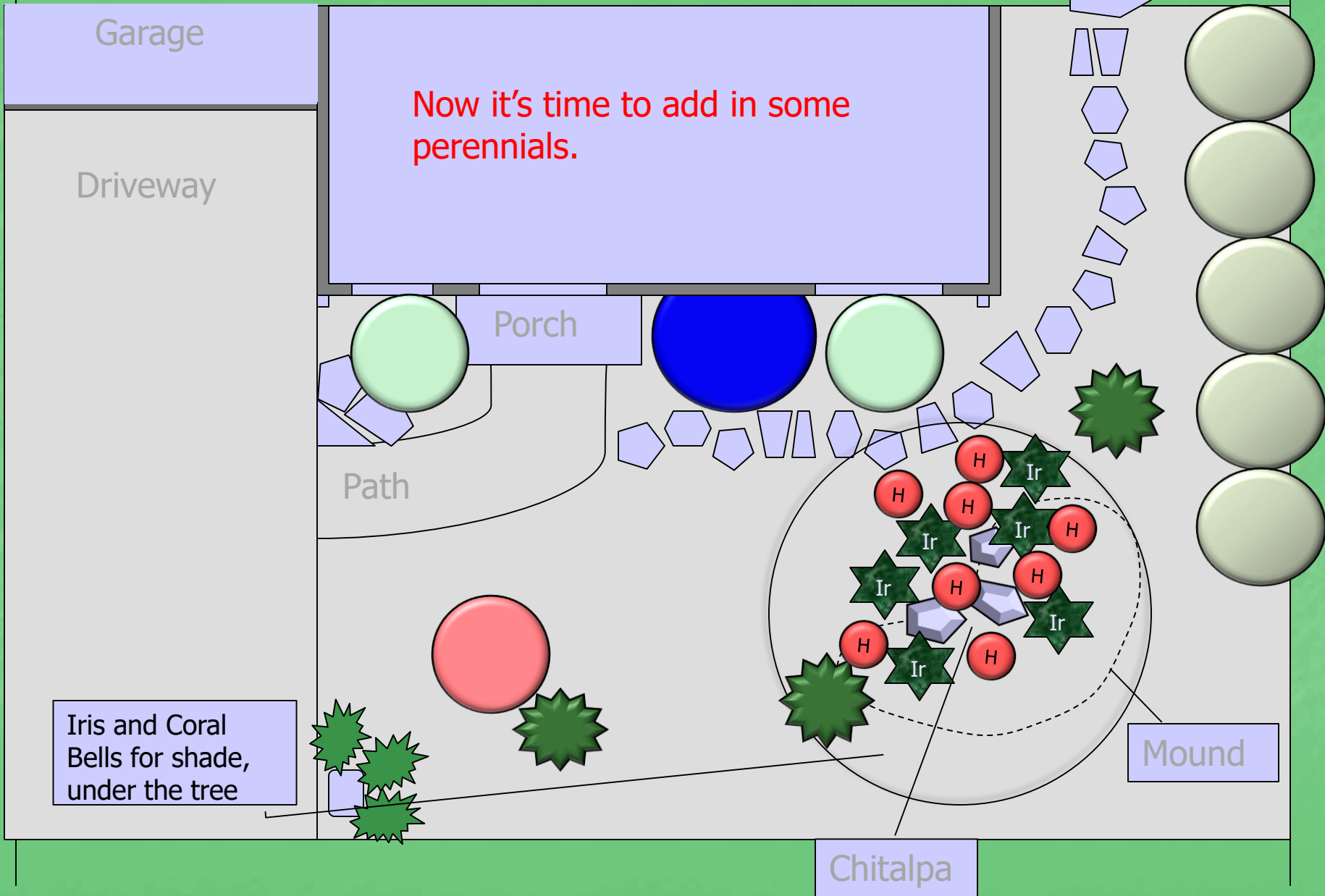
Medium Size Shrubs: The Smaller Bones



Medium Size Shrubs: The Smaller Bones



Perennials: The Guts



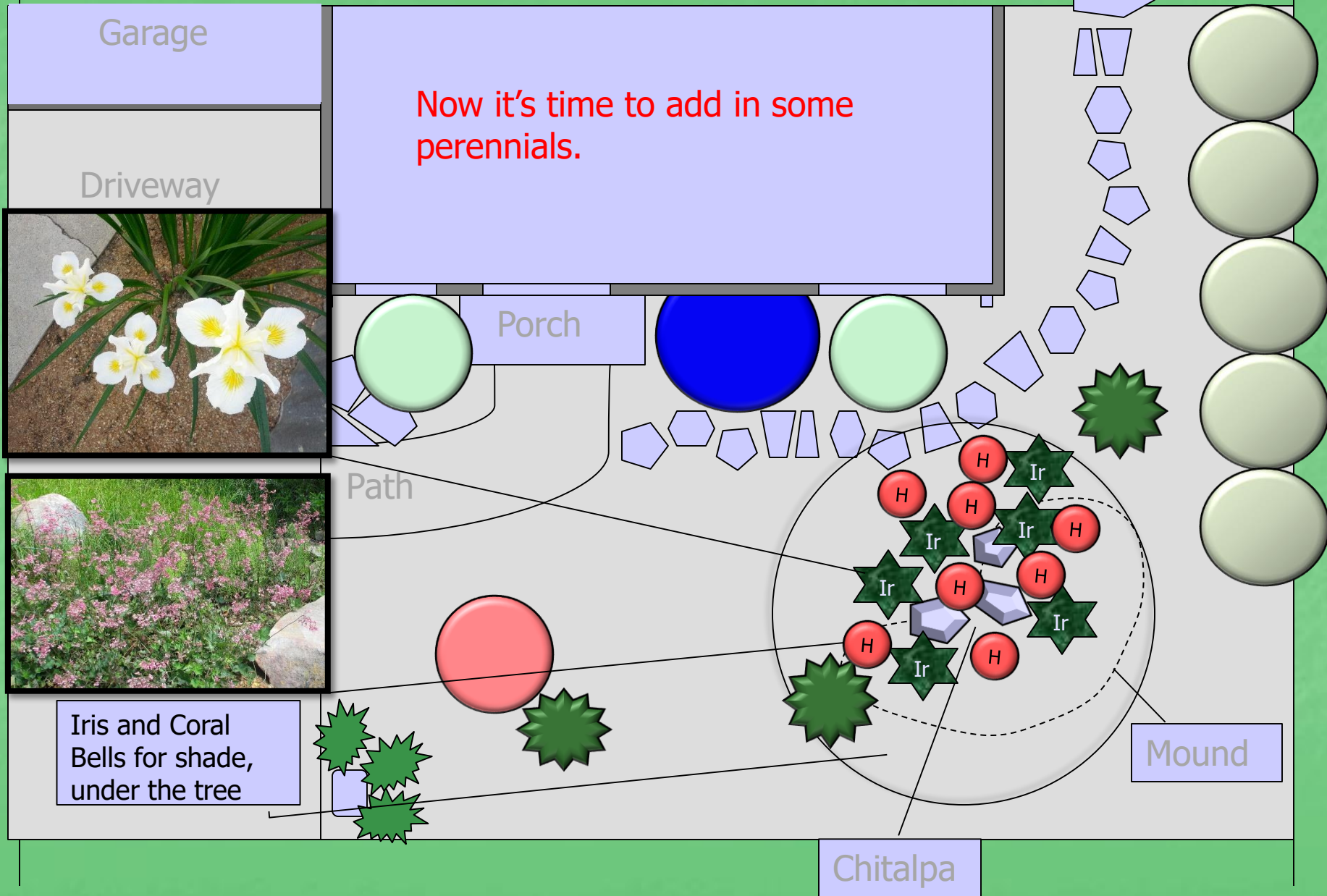
Now it's time to add in some perennials.

Iris and Coral Bells for shade, under the tree

Mound

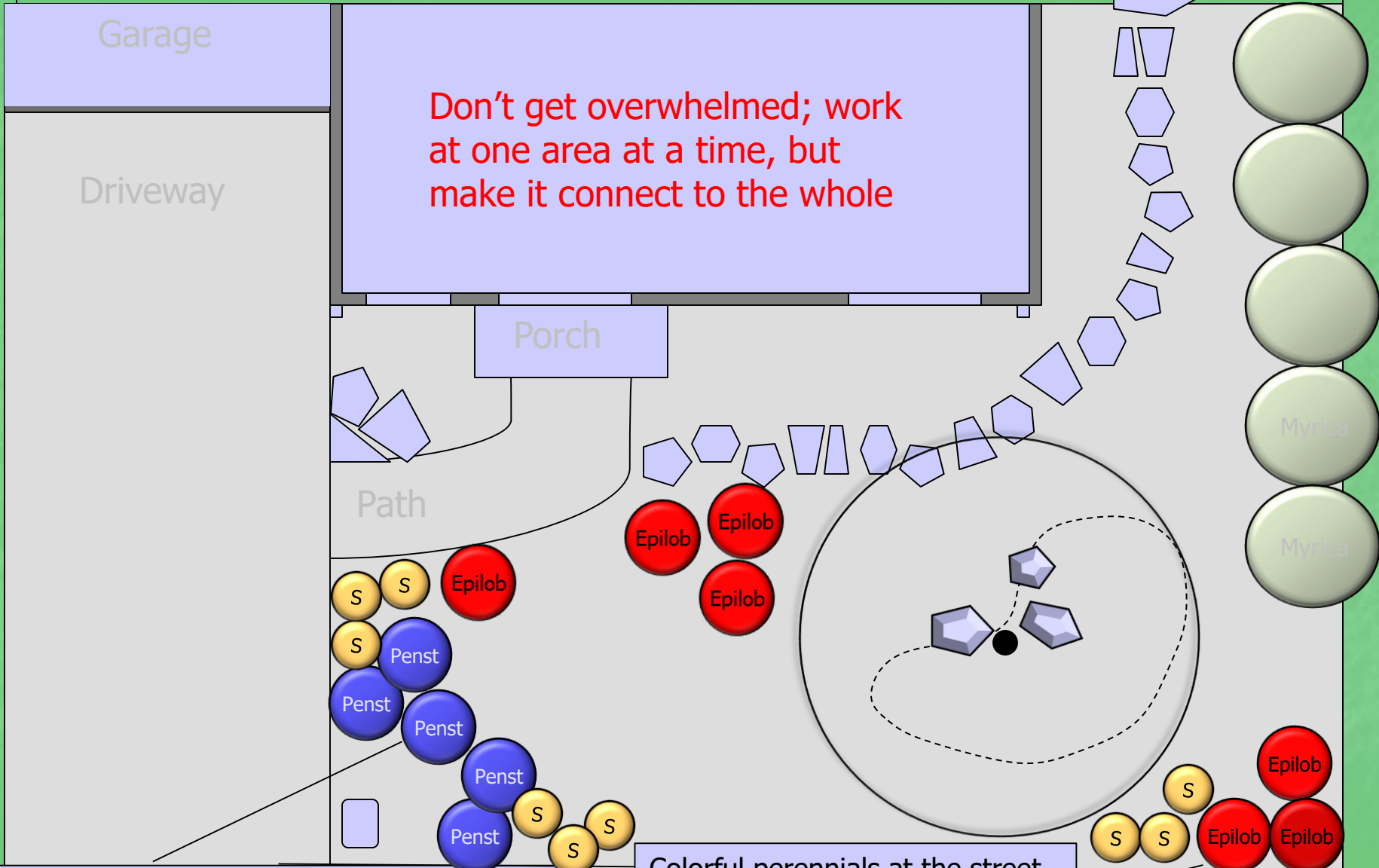
Chitalpa

Perennials: The Guts



Keep infilling

Don't get overwhelmed; work at one area at a time, but make it connect to the whole



Sulfur Buckwheat, Calif Fuchsia and Foothill Penstemon perform in hot, dry areas.

Colorful perennials at the street
Tip: Keep plants low near walkways

Keep infilling

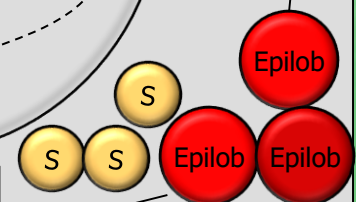
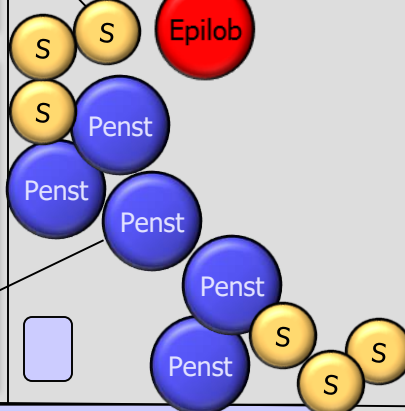
Don't get overwhelmed; work at one area at a time, but make it connect to the whole

Garage

Driveway

Porch

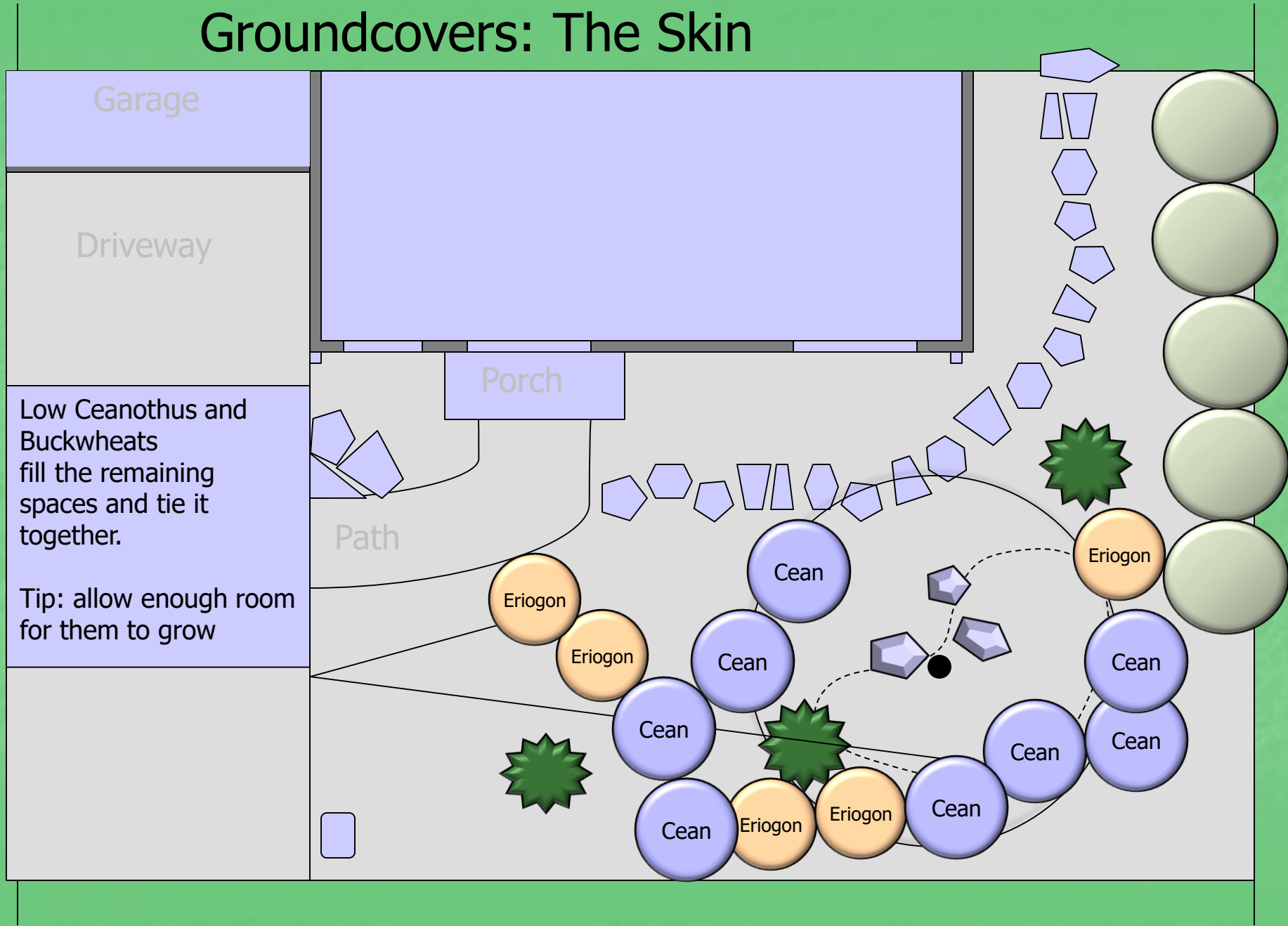
Path



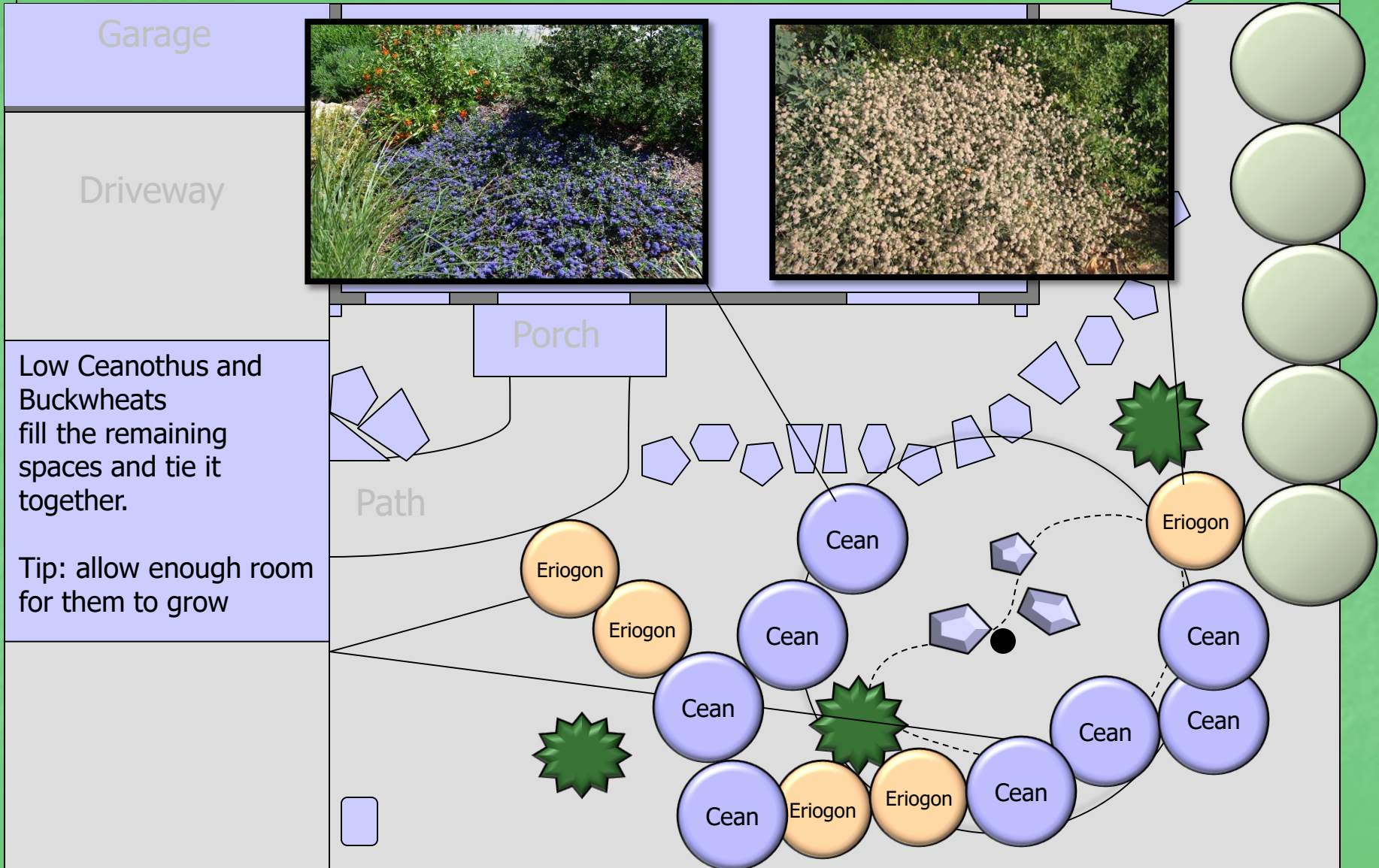
Sulfur Buckwheat, Calif Fuchsia and Foothill Penstemon perform in hot, dry areas.

Colorful perennials at the street
Tip: Keep plants low near walkways

Groundcovers: The Skin



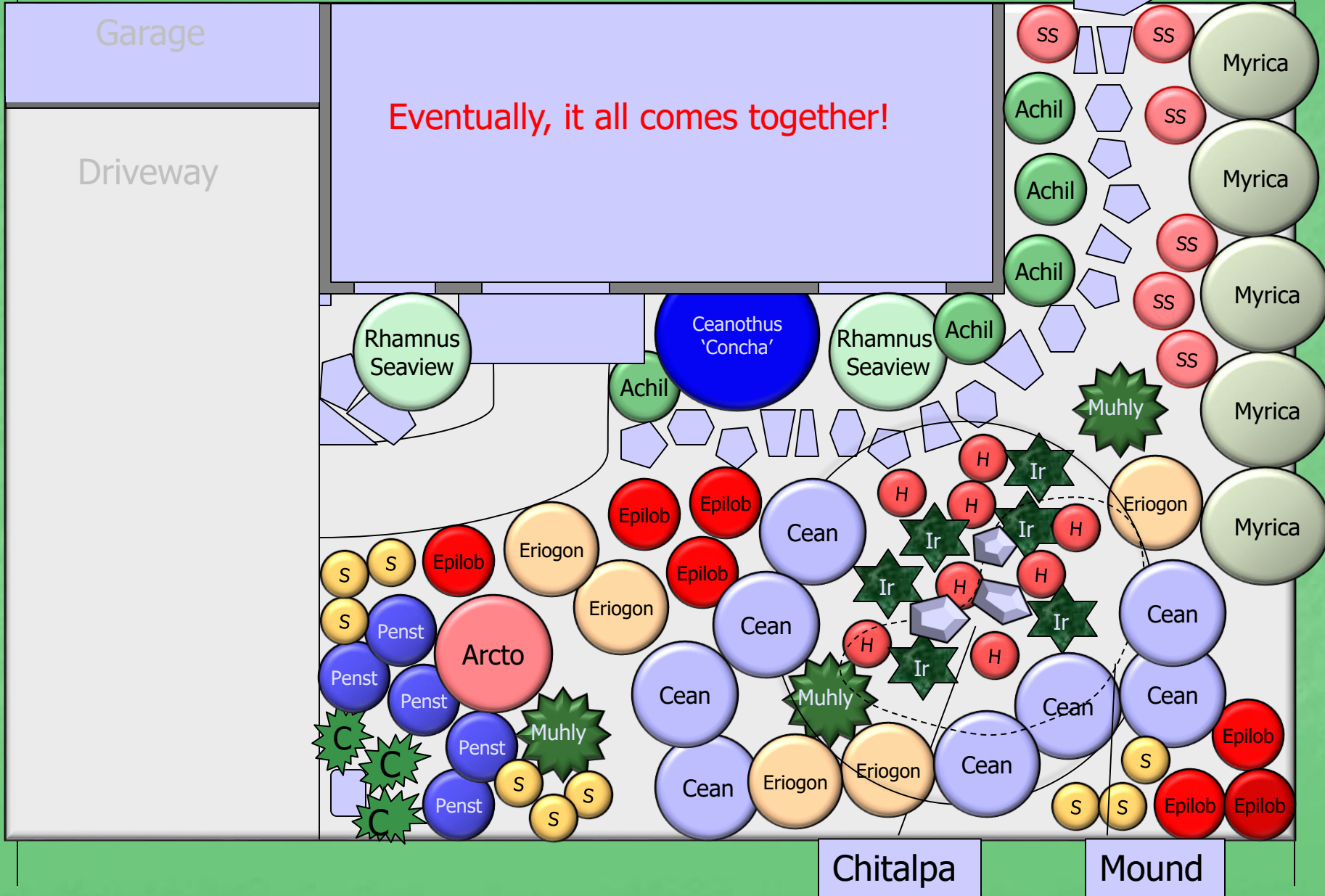
Groundcovers: The Skin



Planting Plan (for ordering)

<i>Botanical Name</i>	<i>Common Name</i>	<i>Plant Type</i>
1 x Chitalpa tashkentensis	Chitalpa	Tree
1 Arctostaphylos 'Louis Edmonds'	Manzanita	Specimen Shrub
1 Ceanothus 'Concha'	California Lilac	Specimen Shrub
5 Myrica californica	Wax Myrtle	Screening
2 Rhamnus 'Seaview'	Dwarf Coffeeberry	Foundation Shrub
5 Penstemon 'Margarita BOP'	Foothill Penstemon	Perennial
7 Epilobium 'Select Mattole'	California Fuchsia	Perennial
8 Ceanothus 'Centennial'	California Lilac	Ground Cover
5 Achillea millefolium	Yarrow	Perennial
3 Muhlenbergia rigens	Deer Grass	Architectural Grass
6 Salvia spathacea	Hummingbird Sage	Perennial
5 Eriogonum 'Warriner Lytle'	California Buckwheat	Ground Cover
6 Iris 'Canyon Snow'	Pacific Coast Iris	Accent Perennial
7 Heuchera 'Wendy'	Coral Bells	Perennial
9 Eriogonum 'Shasta Sulfur'	Sulfur Buckwheat	Perennial
3 Carex tumulicola	Berkeley Sedge	Clumping Grass

Planting Plan Example



How to work with a professional and still save money

1. Make a list of goals/desires
2. Take pictures of landscapes you like
3. Create an accurate plot map in 1/4" or 1/8" scale
4. Analyse your sun/shade patterns
5. Make a list of plants you like
6. Use a hose and chalk to determine shapes of hardscapes and write down square footages
7. Go to a building supply w/measurements to help establish materials and budget
 - Then bring in a consulting designer to help you pull the elements together.

HELP WITH HYDROZONING!

www.waterwonk.us

California plant database search tool

Choose city ► Plant search ► My plant list

1

A plant's water needs vary with the climate region where it will live. Choose a city and the tool will place your search in the correct WUCOLS climate region.

2

Proceed to the plant search page, and search to your heart's content. There are 12 different search criteria you could specify, or just bring up the entire regional list, or the full list showing all plants and all 6 regions. You will be presented with the WUCOLS water-use value for each plant.

3

Create a list of plants for your project. This list can be printed or downloaded to your favorite spreadsheet program. We will save your plant lists for you in our database.

- You may have one courtesy plant list for each region. To access your existing plant list for any given region, you must first choose a city in that region, and then go to the plant search page. Your list may be accessed from the "Plant Search" page.
- In order for you to create plant lists, you must register for the site. Signing up is free, quick, and easy to do.

[What is WUCOLS?](#)

Water Use Classifications of Landscape Species

Water Use Classifications of Landscape Species (WUCOLS) provides a guide to estimating irrigation water needs of landscape plantings in each of 6 distinct California climate regions. WUCOLS was developed by the University of California Cooperative Extension in cooperation with landscape professionals and funded by the California Department of Water Resources.



[Click pdf icon to view or download WUCOLS IV plant list. Learn more about WUCOLS \[here\]\(#\)](#)



Get started



Choose City to identify WUCOLS REGION

[Show instructions](#)

Find city in WUCOLS REGION **Go to
Plant Search**

	1 North Central Coastal ▾	
	2 Central Valley ▾	
	3 South Coastal ▾	
	4 South Inland Valley ▾	
	5 High and Intermediate Desert ▾	
	6 Low Desert ▾	

Or find by city name **Find city**

Begins with 

Search for a category

Example: very low water ground covers

Plant Search

North Central Coastal, CA

WUCOLS Region 1

[Choose new city](#)

[Save to PDF](#)

Botanical name begins with

Find

Common name begins with

Find

Plant Type

- Ba Bamboo
- Bu Bulb
- G Grass
- Gc Groundcover
- P Perennial
- Pm Palm
- S Shrub
- Su Succulent
- T Tree
- V Vine

Water use

- Very Low
- Low
- Moderate
- High
- Unknown
- Not appropriate for this region

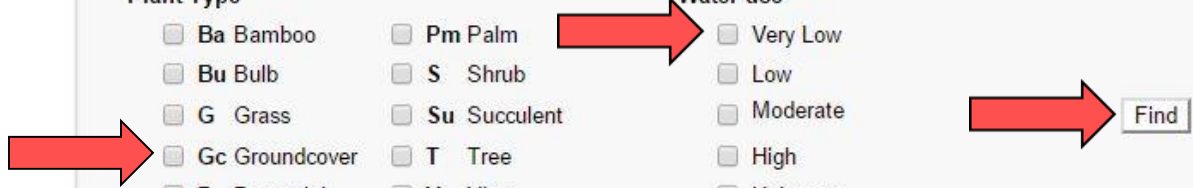
California Native

Reduced Summer Water [What's this?](#)

[Go to WUCOLS list for all 6 regions](#)

All plants for this region

Find



Plant Search

North Central Coastal, CA

WUCOLS Region 1

[Choose new city](#)

[Save to PDF](#)

Botanical name begins with

Find

Common name begins with

Find

Plant Type

- Ba Bamboo Pm Palm
 Bu Bulb S Shrub
 G Grass Su Succulent
 Gc Groundcover T Tree
 P Perennial V Vine

Water use

- Very Low
 Low
 Moderate
 High
 Unknown
 Not appropriate for this region
 Reduced Summer Water [What's this?](#)


Find


[Go to WUCOLS list for all 6 regions](#)

All plants for this region

Find

 New Search

 California Native

 Reduced Summer Water







[Go to list](#)

Search Results

7 plants:

Type-Groundcover

Water use-Very low

Type	Botanical Name	Common Name	Water Use	Flickr Photos	Select for My List
Gc S	Acacia redolens 	prostrate acacia	Very Low	See it	<input type="checkbox"/> Add
Gc S	Adenostoma fasciculatum 	chamise	Very Low	See it	<input type="checkbox"/>
Gc S	Artemisia spp. (shrubby)	sagebrush	Very Low	See it	<input type="checkbox"/>
Gc S	Atriplex CA native species 	saltbush	Very Low	See it	<input type="checkbox"/>
Gc S	Atriplex semibaccata 	Australian saltbush	Very Low	See it	<input type="checkbox"/>
Gc	Iva hayesiana  	poverty weed	Very Low	See it	<input type="checkbox"/>
Gc P	Teucrium cossonii	Majorcan germander	Very Low	See it	<input type="checkbox"/>

**Results for "Very Low Groundcover"
Click on "See it" for a picture!**

Teucrium cossoni - Majorcan Germander



Search for a plant and find out its water requirement

Plant Search

North Central Coastal, CA

WUCOLS Region 1

[Choose new city](#)

[Save to PDF](#)

Botanical name begins with

Find

Common name begins with

Find

Plant Type

- Ba Bamboo
- Bu Bulb
- G Grass
- Gc Groundcover
- P Perennial
- California Native
- Pm Palm
- S Shrub
- Su Succulent
- T Tree
- V Vine

Water use

- Very Low
- Low
- Moderate
- High
- Unknown
- Not appropriate for this region
- Reduced Summer Water [What's this?](#)

Find

[Go to WUCOLS list for all 6 regions](#)

All plants for this region

Find

[New Search](#)

[California Native](#)

[Reduced Summer Water](#)

[Go to list](#)

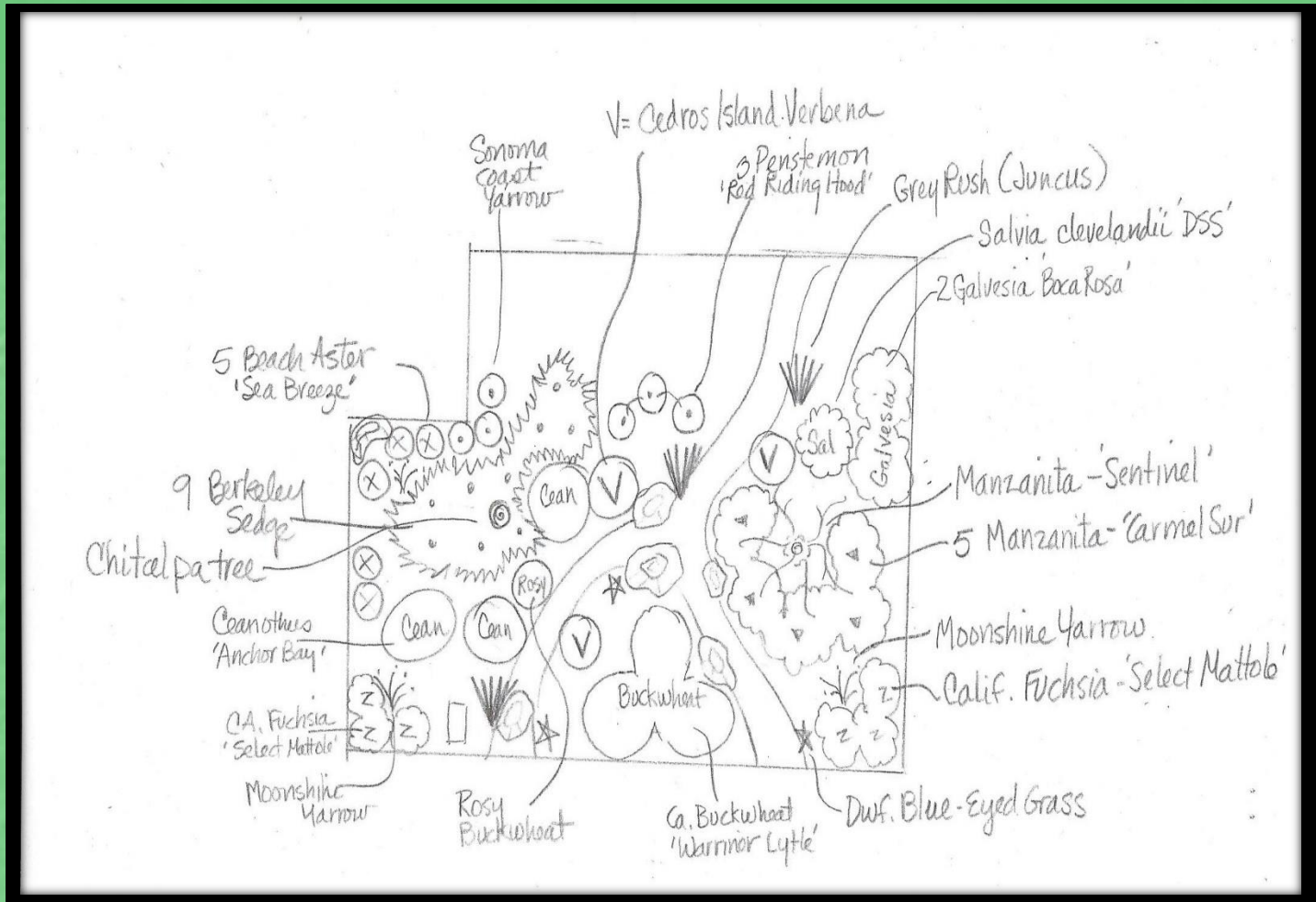
Search Results

1 plants:

common name begins with "Japanese Maple"

Type	Botanical Name	Common Name	Water Use	Flickr Photos	Select for My List
T	Acer palmatum	Japanese maple	Moderate	See it	<input type="checkbox"/> Add

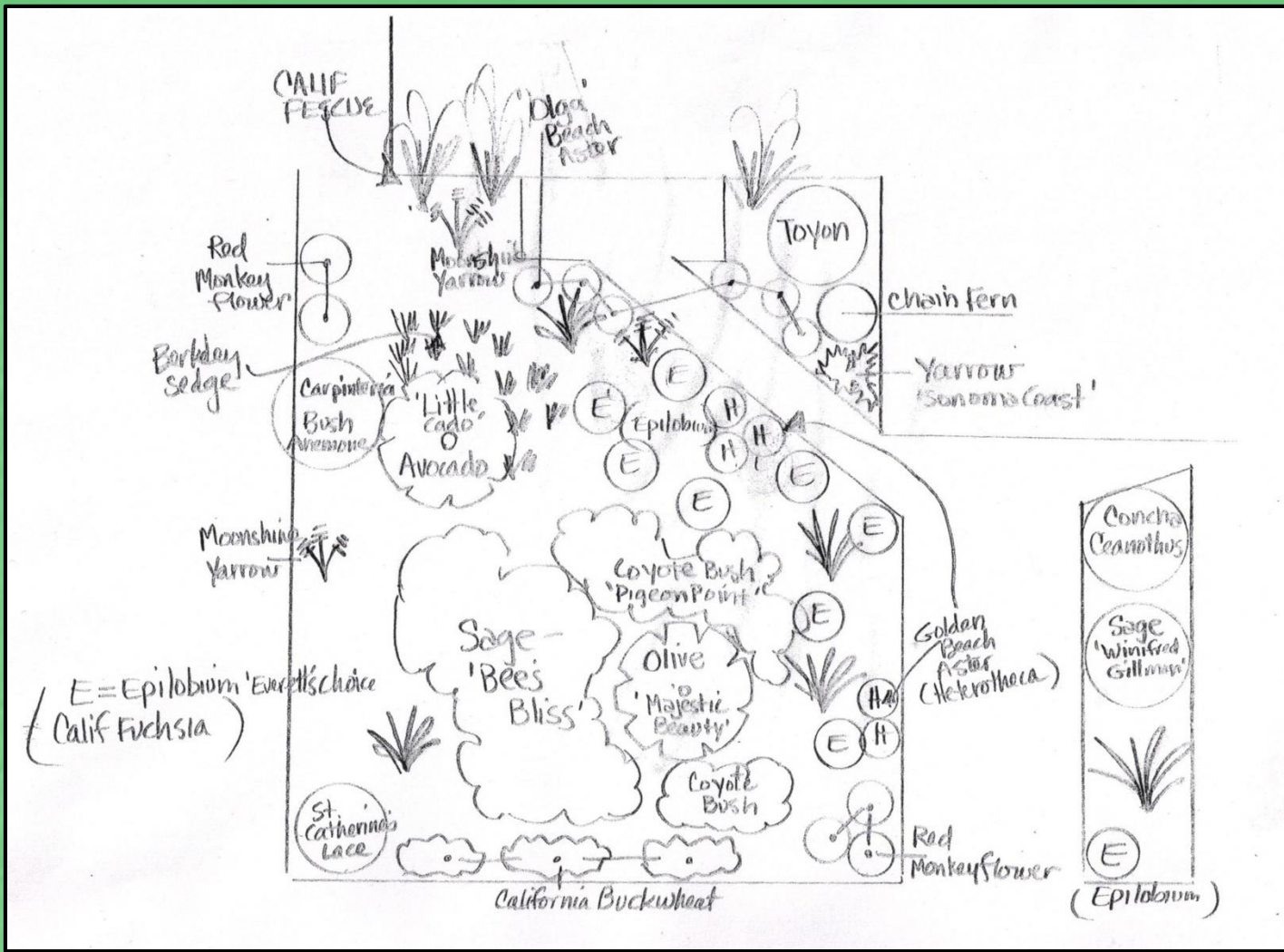
***Some examples of
simple front yard installations***



Design Sketch with Dry Creek



Installed Front Yard



Design Sketch with Olive Tree



Newly planted Oct. '09



Two years after planting



START WITH

THE END

IN MIND